



TS-M10/144H

Monocrystalline Module

560W-580W



580W
Maximum Power Output

22.50%
Maximum Module Efficiency

0~+3%
Power Output Guarantee

N-Type



16BB(182mm)

- FIRE CLASS A**
Maximum fire protection through double glazing according to the highest safety requirements
- REINSURANCE COVERAGE**
Taoistic is reinsured for 30 years of performance guarantee

<p>High quality silicon wafers guarantee high power module output and excellent cost-effectiveness, making it an ideal choice for large power plants</p>	<p>Selected packaging materials and strict process plans to ensure component PID resistance</p>	<p>Lower oxygen and carbon content leads to lower LID</p>
<p>Adapt to harsh outdoor environments through weather resistance tests such as sand and dust, salt spray, and ammonia gas</p>	<p>The design of series and parallel connection reduces the series resistance R_s of components, reduces internal electrical performance losses, and improves the power generation capacity of the system end</p>	<p>Our company has concluded a reinsurance agreement with Ariel Re - Lloyd's syndicate 1910. Please see http://verification.arielre-cleanenergy.com</p>

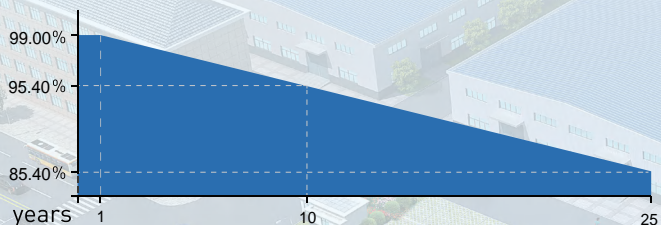
Deliver Reliable Performance Over Time

- manufacturer of crystalline silicon photovoltaic modules
- Fully automatic facility and world-class technology
- Rigorous quality control to meet the highest standard: ISO9001:2015, ISO14001: 2015 and ISO45001: 2008
- Tested for harsh environments (salt mist, ammonia corrosion and sand blowing test: IEC 61701, IEC 62716)
- Long term reliability tests
- 2x100% EL inspection ensuring defect-free modules
- Fire class1 certificate for ITALY

WARRANTY

- 12 years product warranty
- 25 years performance warranty

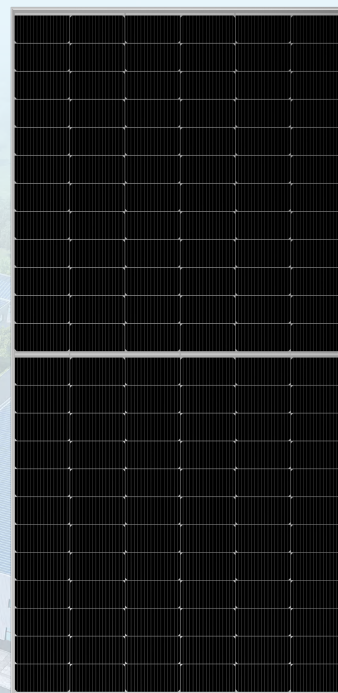
Linear Performance Warranty



12 Years Product Warranty 30 Years Linear Power Warranty

* Please refer to standard warranty for details

Product Certification



TS-M10/144H

Monocrystalline Module

560W-580W

Electrical Specification [STC*]

		560	565	570	575	580
Maximum Power	Pmax[W]	560	565	570	575	580
Maximum Power Voltage	Vmp[W]	41.95	42.14	42.29	42.44	42.59
Maximum Power Current	Imp[A]	13.35	13.41	13.48	13.55	13.62
Open Circuit Voltage	Voc[V]	50.67	50.87	51.07	51.27	51.47
Short Circuit Current	Isc[A]	14.13	14.19	14.25	14.31	14.37
Module Efficiency	[%]	21.70	21.90	22.10	22.30	22.50
Power Output Tolerance	[W]	0~+3%				

* Irradiance 1000W/m², Module Temperature 25°C, Air Mass 1.5

Electrical Specification [NOCT*]

		425	429	432	436	440
Maximum Power	Pmax[W]	425	429	432	436	440
Maximum Power Voltage	Vmp[W]	39.38	39.51	39.60	39.69	39.81
Maximum Power Current	Imp[A]	10.79	10.85	10.92	10.99	11.05
Open Circuit Voltage	Voc[V]	48.06	48.20	48.33	48.46	48.60
Short Circuit Current	Isc[A]	11.49	11.55	11.62	11.68	11.75

* Irradiance 800W/m², Ambient Temperature 20°C, Wind Speed 1m/s

Mechanical Data

Number of Cells	144 pieces [6 × 24]
Dimensions of Module L*W*H [mm]	2278 × 1134 × 30/35mm
Weight [kg]	Approx 28.7/29.0 kg
Front Side Glass	3.2 , Anti-reflection coating glass
Backsheet	White
Frame	Anodized aluminium
J-Box	Protection level IP68
Cable	4.0mm ² ,300mm
Number of diodes	3
Wind/Snow Load	2400 Pa/5400 pa*
Connector	MC4 compatible or MC compatible

* For more details please check the installation manual

Temperature Ratings

Nominal Operating Cell Temperature [NOCT]	44 ± 2
Temperature Coefficient of Isc	+0.046%/
Temperature Coefficient of Voc	-0.250%/
Temperature Coefficient of P _{MAX}	-0.300%/

Temperature Ratings

Operational Temperature	-40~+85
Maximum System Voltage	1500V DC-[H]
Max Series Fuse Rating	25A

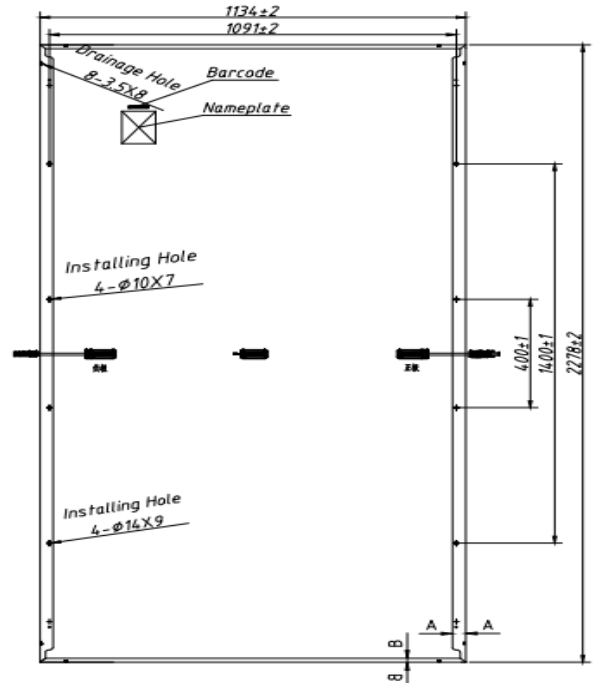
Packaging Configuration

Module per box	36/31 pieces
Module per 17.5 flatcar	972/868 pieces
Module per 40 container	720/620 pieces

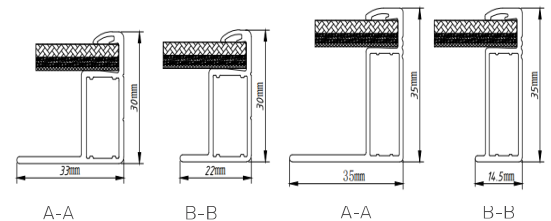
Optional

Connector	Original MC
Cable length	1200mm
Frame	Black
Backsheet	Black

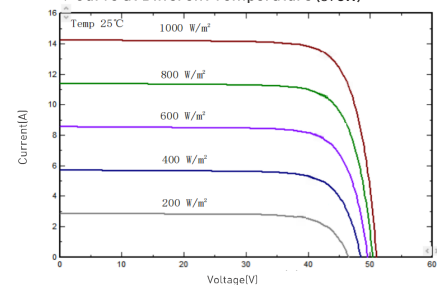
Module Dimension



Back View



I-V Curve at Different Temperature (570W)



I-V/P-V Curve at Different Irradiation (570W)

