



TS-M10/108G

Monocrystalline Module

410W-430W



430W
Maximum Power Output

22.00%
Maximum Module Efficiency

0~+3%
Power Output Guarantee

N-Type



16BB(182mm)

- FIRE CLASS A**
Maximum fire protection through double glazing according to the highest safety requirements
- REINSURANCE COVERAGE**
Taoistic is reinsured for 30 years of performance guarantee

<p>High quality silicon wafers guarantee high power module output and excellent cost-effectiveness, making it an ideal choice for large power plants</p>	<p>Selected packaging materials and strict process plans to ensure component PID resistance</p>	<p>Lower oxygen and carbon content leads to lower LID</p>
<p>Adapt to harsh outdoor environments through weather resistance tests such as sand and dust, salt spray, and ammonia gas</p>	<p>The design of series and parallel connection reduces the series resistance R_s of components, reduces internal electrical performance losses, and improves the power generation capacity of the system end</p>	<p>Our company has concluded a reinsurance agreement with Ariel Re - Lloyd's syndicate 1910. Please see http://verification.arielre-cleanenergy.com</p>

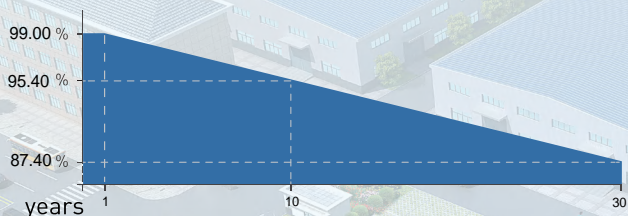
Deliver Reliable Performance Over Time

- manufacturer of crystalline silicon photovoltaic modules
- Fully automatic facility and world-class technology
- Rigorous quality control to meet the highest standard: ISO9001:2015, ISO14001: 2015 and ISO45001: 2008
- Tested for harsh environments (salt mist, ammonia corrosion and sand blowing test: IEC 61701, IEC 62716)
- Long term reliability tests
- 2×100% EL inspection ensuring defect-free modules
- Fire class1 certificate for ITALY

WARRANTY

- 12 years product warranty
- 30 years performance warranty

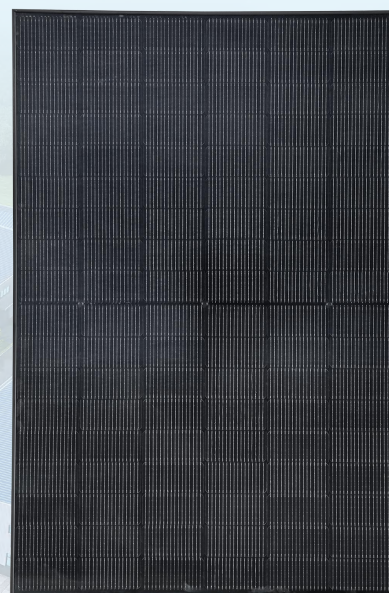
Linear Performance Warranty



12 Years Product Warranty 30 Years Linear Power Warranty

* Please refer to standard warranty for details

Product Certification



TS-M10/108G

Monocrystalline Module

410W-430W

Electrical Specification [STC*]

Maximum Power	P _{max} [W]	410	415	420	425	430
Maximum Power Voltage	V _{mp} [V]	31.13	31.32	31.51	31.70	31.88
Maximum Power Current	I _{mp} [A]	13.19	13.26	13.33	13.41	13.49
Open Circuit Voltage	V _{oc} [V]	37.73	37.92	38.11	38.30	38.49
Short Circuit Current	I _{sc} [A]	13.91	13.99	14.07	14.15	14.23
Module Efficiency	[%]	21.10	21.30	21.50	21.80	22.00
Power Output Tolerance	[W]			0~+3%		

* Irradiance 1000W/m², Module Temperature 25°C, Air Mass 1.5

Electrical Specification [NOCT*]

Maximum Power	P _{max} [W]	308	312	316	320	324
Maximum Power Voltage	V _{mp} [V]	29.06	29.21	29.34	29.50	29.66
Maximum Power Current	I _{mp} [A]	10.61	10.68	10.76	10.83	10.93
Open Circuit Voltage	V _{oc} [V]	35.84	36.02	36.20	36.38	36.56
Short Circuit Current	I _{sc} [A]	11.23	11.29	11.36	11.42	11.49

* Irradiance 800W/m², Ambient Temperature 20°C, Wind Speed 1m/s

Mechanical Data

Number of Cells	108 pieces [6 × 18]
Dimensions of Module L*W*H [mm]	1722 × 1134 × 30/35mm
Weight [kg]	Approx 25.8/26.1 kg
Front Side Glass	2.0 , Anti-reflection coating glass
Back Side Glass	2.0 , Hightransparency solar glass
Frame	Anodized aluminium
J-Box	Protection level IP68
Cable	4.0mm ² , 300mm
Number of diodes	3
Wind/Snow Load	2400 Pa/5400 pa*
Connector	MC4 compatible or MC compatible

* For more details please check the installation manual

Temperature Ratings

Nominal Operating Cell Temperature [NOCT]	44 ± 2
Temperature Coefficient of I _{sc}	+0.046%/
Temperature Coefficient of V _{oc}	-0.250%/
Temperature Coefficient of P _{MAX}	-0.300%/

Temperature Ratings

Operational Temperature	- 40~+85
Maximum System Voltage	1500V DC-[H]
Max Series Fuse Rating	25A

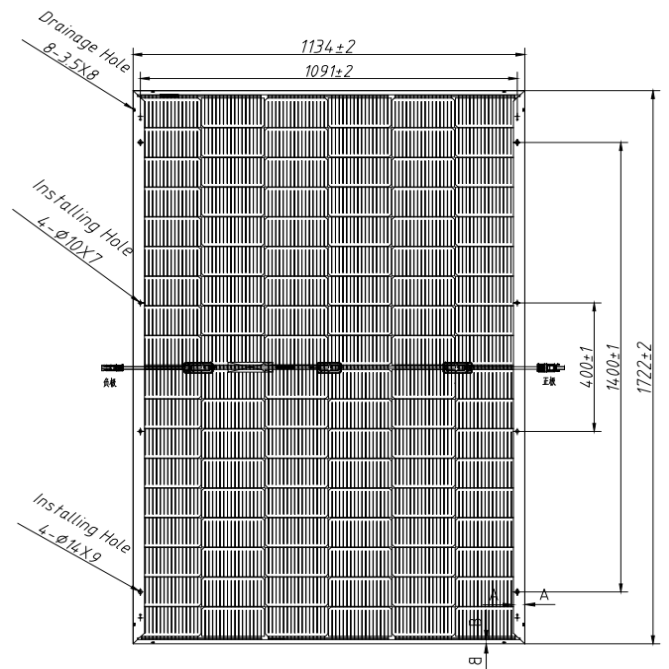
Packaging Configuration

Module per box	36/31 pieces
Module per 17.5 flatcar	1080/1085 pieces
Module per 40 container	828/806 pieces

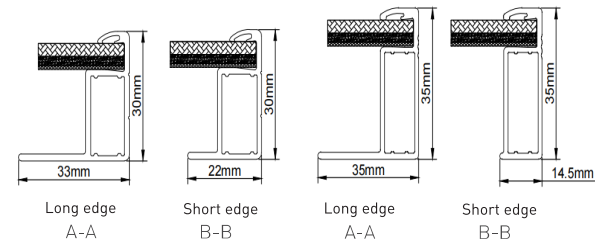
Optional

Connector	Original MC
Cable length	1200mm
Frame	Silver
Glass	White

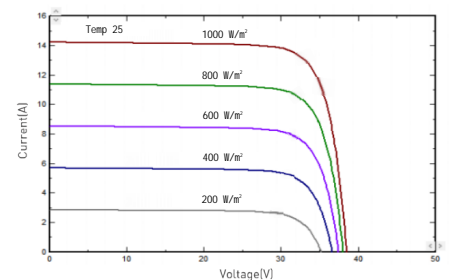
Module Dimension



Back View



I-V Curve at Different Temperature (430W)



I-/P-V Curve at Different Irradiation (430W)

